



# Politechnika Wroclawska



## The negative effects of biomass combustion and co-combustion in small power boilers

Tomasz Hardy

Institute of Heat Engineering and Fluid Mechanics  
Wrocław University of Technology

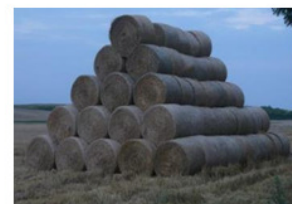
07.2014



Politechnika Wroclawska

## Why does the energy sector has its interest in biomass combustion?

- The increasing importance of renewable energy sources in the UE as a result of the need to lower the emission of CO<sub>2</sub>, and the need of lowering the fossil fuels used
- The cheapest way for energy manufacturers to produce „green energy”
- The system of „green certificates” – as a support for the development of renewable energy (regulations for energy producers). This kind of support has been significantly reduced...





Politechnika Wroclawska

## Why does the energy sector has its interest in biomass combustion?

- The use of biomass in power sector is the so-called "zero balance of CO<sub>2</sub> emission"

„zero balance of CO<sub>2</sub> emission” →

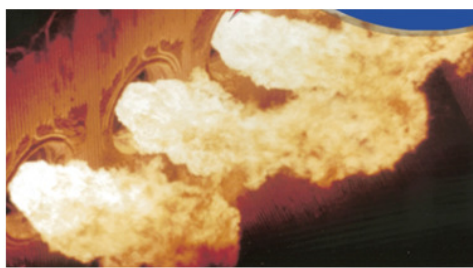
CO<sub>2</sub> emissions during combustion of biomass – CO<sub>2</sub> absorption by the biomass during its growth = zero (???)



Politechnika Wroclawska

## Biomass combustion and co-combustion in energetics

- in furnaces of power boilers (stoker boilers, fluidized bed boilers, pulverized coal boilers)
- in furnaces of small heating plants boilers (eg., stoker boilers)





Politechnika Wroclawska

## Gaseous pollutants emitted while biomass combustion and co-combustion

The most important pollutants that are emitted while combustion of biomass (similar like in the case of coal):

- Carbon dioxide -  $\text{CO}_2$
- Carbon monoxide -  $\text{CO}$
- Nitrogen oxides -  $\text{NO}_x$
- Sulfur oxide -  $\text{SO}_2$
- Hydrocarbons -  $\text{C}_x\text{H}_y$
- Chloride and chlorine –  $\text{HCl}$  and  $\text{Cl}_2$



Politechnika Wroclawska

## Gaseous pollutants emitted while biomass combustion and co-combustion

as well as:

- Volatile Organic Compounds – VOCs (aldehydes, ketones, alcohols, aromatic hydrocarbons)
- Persistent Organic Pollutants – POPs (Polycyclic Aromatic Hydrocarbons (PAHs))
- total dust and subfractions ( $\text{PM}_{10}$ ,  $\text{PM}_{2.5}$ )

Some of these compounds have been identified as carcinogenic, mutagenic and teratogenic.

- lotne związki organiczne (LZO) – aldehydy (np. Formaldehyd), alkohole, estry, WA (benzen, toluen, ksylen)

- trwałe związki organiczne (TZO) – wielopierścieniowe węglowodory aromatyczne (WWA), dioksyny i furany (PCDDs i PCDFs) i polichlorowane bifenyle,

- pył całkowity (TSP) oraz jego frakcje  $\text{PM}_{10}$ ,  $\text{PM}_{2.5}$ .

W mniejszym stopniu metale ciężkie – raczej tylko niektóre rodzaje biomasy.



Politechnika Wroclawska

## Gaseous pollutants emitted while biomass combustion and co-combustion

Emissions of  $\text{NO}_x$ , CO and organic pollutants (as PAHs, PCDD and PDF) strictly depends on the combustion technology and fuel characteristics.

It should be noted that biomass combustion in an oven/boiler with outdated design also results in a large emission of toxic pollutants.

High emission of toxic components, due to the low height of chimneys in the residential sector (small boilers/heating stoves), causes a high concentration of air pollutants at ground level (so-called low-emission). This is dangerous especially in densely populated areas due to direct inhalation of contaminated air by humans and eating contaminated food.



Politechnika Wroclawska

## Low-emission

„Low emissions” - the potential high risk to health and the environment arising from the frequent burning of hazardous waste by the neighbours.

Wrocław – okolice ul. Traugutta





Politechnika Wroclawska

## Problems related to biomass combustion

Biomass is different than coal due to its content, however, the most important factor is the difference in its mineral matter. The use of biomass (in particular straw) in the process of co-combustion in pulverized coal boilers involves some risks and exploitation hazards.

Combustion of biomass which contains **chlorine** causes chloride corrosion hazards.

Even if the fuel does not contain chlorine a large **potassium** content in ash ligninocellulose biomass results in more intensive slugging, which can in turn intensify corrosion hazards.



Politechnika Wroclawska

## Examples of some components in ash from biomass and coal

Comp., %	Wood (oak/dąb)	Wheat straw	Ggrass/hay/siano	Sunflower husks/tuski	Rape straw	Olive pomace	Wood pellets	Hard coal
SiO <sub>2</sub>	49,0	41,51	28,28	2,32	22,10	15,10	65,87	42,83
Al <sub>2</sub> O <sub>3</sub>	9,5	1,00	16,51	0,49	1,73	2,28	3,67	22,11
TiO <sub>2</sub>	-	0,00	0,22	0,05	0,15	0,14	0,27	0,98
FeO <sub>3</sub>	8,5	0,72	3,43	0,41	0,63	1,30	2,15	20,06
CaO	17,5	8,13	23,59	14,90	20,20	13,40	15,72	5,73
MgO	1,1	1,99	1,81	7,57	1,24	4,26	3,75	1,12
Na <sub>2</sub> O	0,5	0,57	0,92	0,10	0,33	4,41	0,65	1,06
K <sub>2</sub> O	<b>9,5</b>	<b>31,95</b>	<b>22,15</b>	<b>36,00</b>	<b>23,80</b>	<b>26,10</b>	<b>7,16</b>	<b>1,21</b>
P <sub>2</sub> O <sub>5</sub>	1,8	4,42	4,0	4,17	1,43	4,41		0,47
SO <sub>3</sub>	2,6	3,28	2,58	-	-	-	0	4,93
Cl <sup>d</sup>	<b>0,02</b>	<b>0,21</b>	<b>0,19</b>	<b>1,28</b>	<b>0,50</b>	<b>0,37</b>	<b>0,02</b>	<b>0,2</b>



Politechnika Wroclawska

## Chloride corrosion hazard

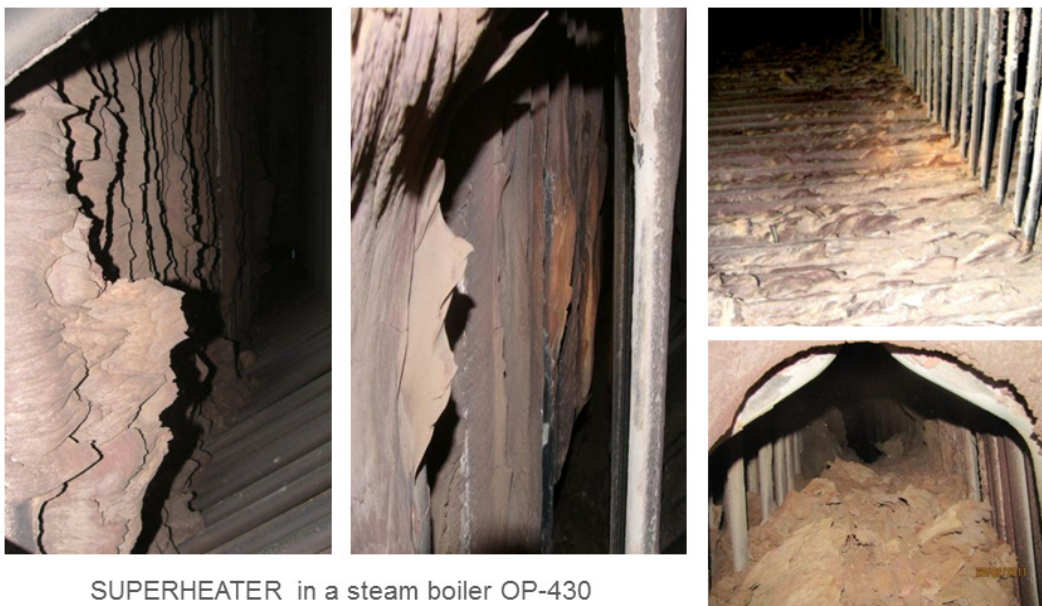
Fuel indicator of chloride corrosion hazard <i>Paliwowy wskaźnik korozji chlorkowej, <math>PW_k</math></i>	Characteristics Charakterystyka	Chloride corrosion hazard Zagrożenie korozją chlorkową
0	Cl < 0,02	Brak
1	S/Cl duże	Bardzo małe
2	S/Cl i K duże	Małe
3	S/Cl małe	Duże
4	S/Cl małe i K duże	Bardzo duże

	Wood/Drewno	Wheat/Pszenica	Rape/Rzepak	Miskantus
A	0,14	1,79	2,47	0,54
Cl	0,01	0,47	0,62	0,11
S	-	0,41	0,31	0,04
K <sub>2</sub> O	39,9	32,2	34,4	32,2
$PW_k$	1 (zagrożenie b. małe)	4 (zagrożenie b. duże)	4 (zagrożenie b. duże)	4 (zagrożenie b. duże)



Politechnika Wroclawska

## Slagging process of heating surfaces in boilers



SUPERHEATER in a steam boiler OP-430  
(content of biomass in the flow of fuel 10- 25%)



Politechnika Wroclawska

## The process of slagging of water walls and superheaters in boilers



**RIGHT WATER WALL**

Content of chosen elements in deposits:

S – 1,71 %  
Cl – 0,03 %  
K – 0,92 %

S – 7,39 %  
Cl – 0,10 %  
K – 13,08 %



**SUPERHEATER**



Politechnika Wroclawska

## Water wall's slugging – example 1

Water wall of a pulverized coal boiler kotła pyłowego – approx. 50% of biomass





Politechnika Wroclawska

## Water wall's slugging – example 2

Melted deposit (slag) flowed on water wall – approx. 50% of biomass



Politechnika Wroclawska

## The effects of corrosion in water wall pipes

Pulverized coal boiler OP-430 (10-25% of biomass)







Politechnika Wroclawska

# Field research of corrosion and slagging processes



Politechnika Wroclawska

## Investigation of corrosion hazards with the use of a probe



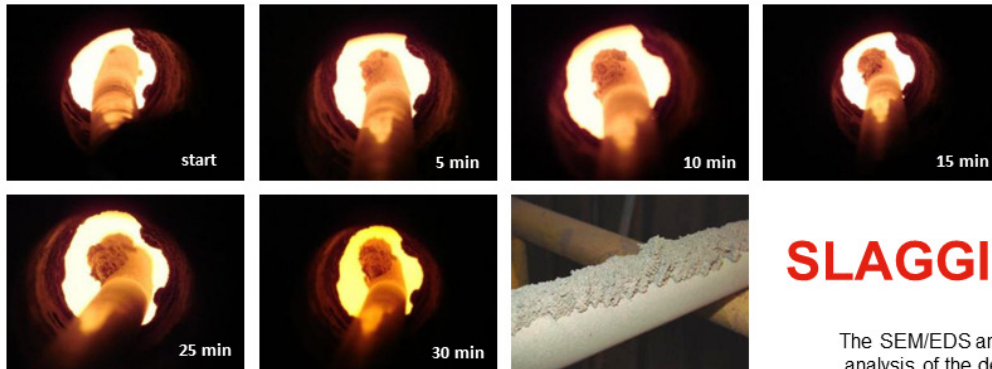
### CORROSION





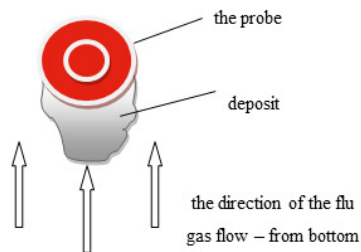
Politechnika Wroclawska

## Field research of the deposits with the use of corrosion probe

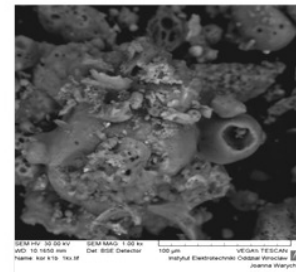


### SLAGGING

The SEM/EDS and XRD analysis of the deposits



Video clip



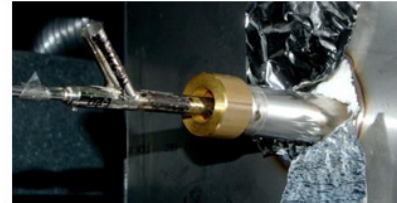
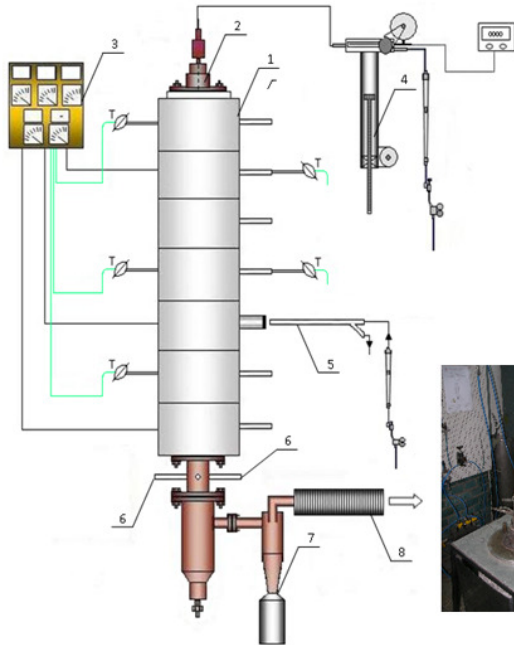
Politechnika Wroclawska

## Laboratory research of corrosion and slagging processes



Politechnika Wroclawska

## Laboratory apparatus (the drop-tube furnace)



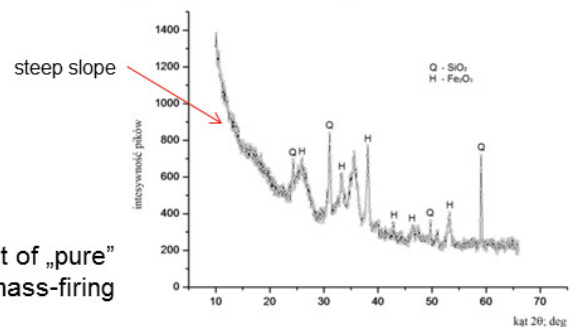
Politechnika Wroclawska

## Laboratory investigation of slagging during biomass combustion



The deposit collected on the probe during combustion of agro biomass

Mineral components of deposit of „pure” AGRO biomass-firing





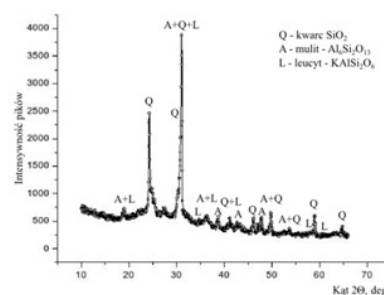
Politechnika Wroclawska

## Laboratory investigations of deposits of biomass-firing with additives



The deposit collected on the probe during comustion of the mixture of agro biomass with an additive of selected lignite ash

Mineral components of the deposit in biomass-firing with a mineral additive



Politechnika Wroclawska

## Biomass pelletizing process

Pelletizing - techique of solid biomass densification (eg., sawdust, shavings, flakes, grains, wood chips and straw).

Benefits of biomass pelletizing:

- uniform size,
- high energy density,
- significant calorific value,
- low moisture content,
- easy to grind.





Politechnika Wroclawska

## Manufacturing Fuel Pellets from Biomass

Approx. 1t/h



Politechnika Wroclawska

## Manufacturing Fuel Pellets from Biomass

Approx. 5t/h

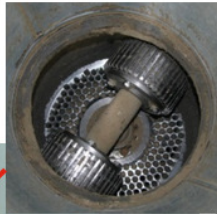




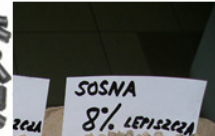
Politechnika Wroclawska

## Biomass pelletizing in laboratory scale

Pelletizing device KL200B,  
capacity 90 kg/h

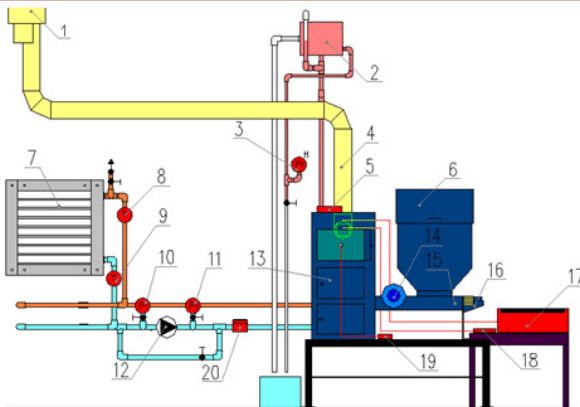


Different types of pellets



Politechnika Wroclawska

## Experimental setup – retort boiler KP15 (15kW)



nominal heating power	– 15 kW
maximum water temperature	– 90 °C
thermal efficiency	– 91 %
flue gas temperature	– 190 °C
fuel consumption	– 0,65÷3,2 kg/h
boiler water capacity	– 48 dm <sup>3</sup>
capacity of storage chamber	– 100 dm <sup>3</sup>



Politechnika Wroclawska

## Pelletizing and combustion of biomass in retort boiler



Investigation of the content of gas pollutants in flue gases ( $O_2$ , CO, NO, HCl, VOCs) – the retort boiler 15kW



The effect of different binders on stability of the pellets



Politechnika Wroclawska





Politechnika Wroclawska

## Wood pellets

Video clip



Politechnika Wroclawska

## Influence of a certain type of a fuel on the furnace operation



wheat



miscanthus



coal

The impact of the biomass fuels on the slagging of the retort burner and combustion chamber





Politechnika Wroclawska

## Volatile Organic Compounds and HCl concentration in the exhaust gas



VOCs (LZO) were concentrated on activated carbon, desorbed CS<sub>2</sub> and analyzed by gas chromatography.

Formaldehyde was absorbed in water and analyzed colorimetrically.



Politechnika Wroclawska

	Wood Drewno	Wheat Pszenica	Rape Rzepak	Miscantus Miskantus
Fuel prop. $Q_i^a$ , kJ/kg	16752	14912	14523	15005
$A^a$ , %	0,14	1,79	2,47	0,54
$W^a$ , %	5,04	5,93	5,3	6,44
$Cl^a$ , %	0,01	0,47	0,62	0,12
Thermal power, kW	13,5	13,5	12,2	11,9
Temperature, °C	210-225	220-240	200-225	240-290
Efficiency, %	75,1	71,3	65,9	66,2
O <sub>2</sub> , % obj.	10-12	10-12	10-12	12-13
CO, mg/m <sup>3</sup>	1230-2000	9250-14800	20300-37000	2200-3700
NO, mg/m <sup>3</sup>	134-236	200-270	134-174	187-240
HCl, mg/m <sup>3</sup>	22	53	15	5



Politechnika Wroclawska

## Concentration of Volatile Organic Compounds while biomass combustion

VOCs	Wood drewno	Rape rzepak	Wheat pszenica
Aldehydes	945,0	589,3	311,6
Ketones	12,0	27,3	13,7
Alcohols	10,9	1,2	0,6
Esters	n.w.	3,4	n.w.
AH	758,4	598,2	165,9
Other*	189,1	17,9	17,0

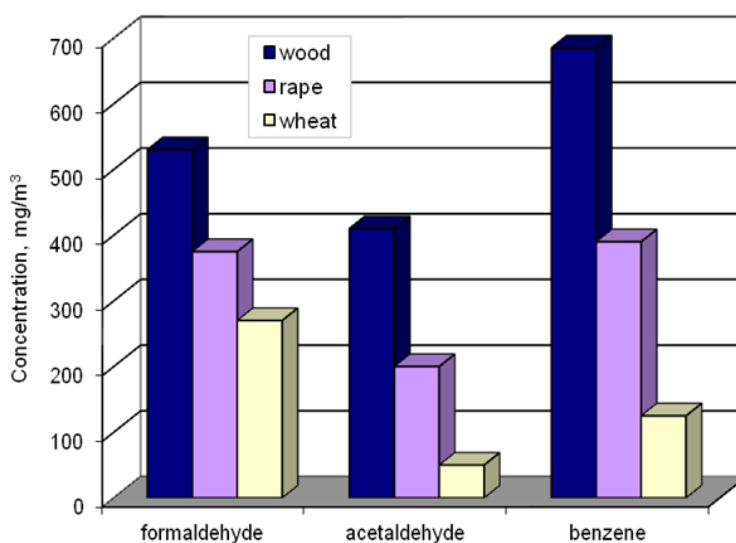
AH – aromatic hydrocarbons

Aldehydes: mainly as formaldehyde and acetaldehyde



Politechnika Wroclawska

## Concentration of Volatile Organic Compounds while biomass combustion



Maximal concentrations of these compounds in the air 50, 20 and 30  $\mu\text{g}/\text{m}^3$  respectively)



Politechnika Wroclawska

## Conclusions from laboratory test

Corrosion and slagging as a result of biomass combustion and co-combustion.

The intensity of these processes relies upon the type of biomass.

Chlorine and potassium have the most negative impact on the process of corrosion and slagging during biomass combustion.

Wood pellet combustion causes the highest emission levels of formaldehyde and acetaldehyde and benzene - highly toxic compounds.

Biomass combustion in small boilers results in high emission level of carbon monoxide.



Politechnika Wroclawska

## Safety is an important issue

Explosion risk is connected with each of the following stages of biomass conversion:

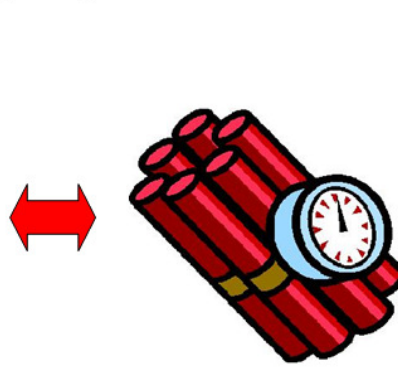
1. Unloading
2. Storage
3. Transport of biomass from storage yard to biomass boiler bunkers.
4. Biomass storage in boiler bunkers.
5. Biomass transport from the bunker to the coal mill.
6. Co-milling of coal/biomass in the coal mill.
7. Feeding of pulverised coal/biomass blend to the combustion chamber.



Politechnika Wroclawska

## Bad practice during co-combustion of biomass & coal

Biomass deposition on belt conveyor engine



J.Zuwała: TOTeM 37, Sept.2011



Politechnika Wroclawska

## Co-milling of biomass & coal



J.Zuwała: TOTeM 37, Sept.2011



Politechnika Wroclawska

## The risk of fire (explosion) during use of biomass



Politechnika Wroclawska

## Dolna Odra mortal accident - Jan. 24<sup>th</sup> 2010





Politechnika Wroclawska

## Turów Power Plant 2012



Politechnika Wroclawska

## The risks associated with the storage of biomass





Politechnika Wroclawska

## The risk of fire during use of biomass

The risks associated with the storage and transport powdery biomass force to take action to improve safety

- safety /danger zone
- safe device
- determination of explosiveness of biofuels (flammability/explosion limits, temperature of ignition, minimal energy of ignition, etc.)



Politechnika Wroclawska

## The minimum ignition energy of pulverized fuels

Video clip !





Politechnika Wroclawska



Politechnika Wroclawska







Politechnika Wroclawska



Politechnika Wroclawska





Politechnika Wroclawska



Politechnika Wroclawska

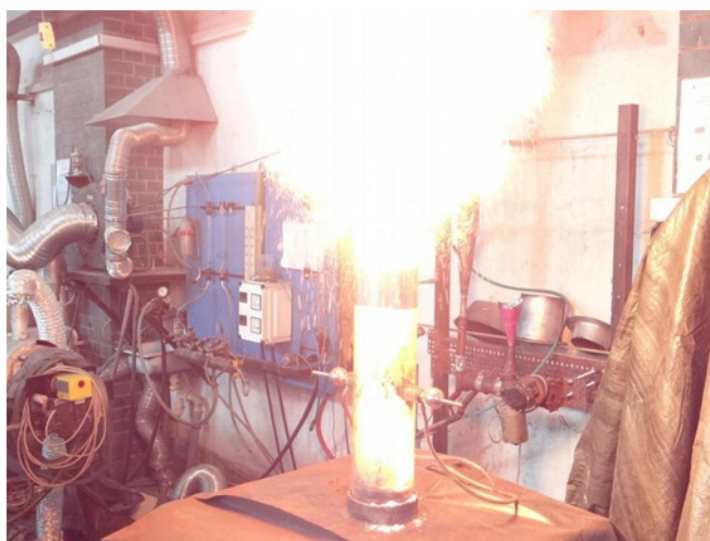




Politechnika Wroclawska

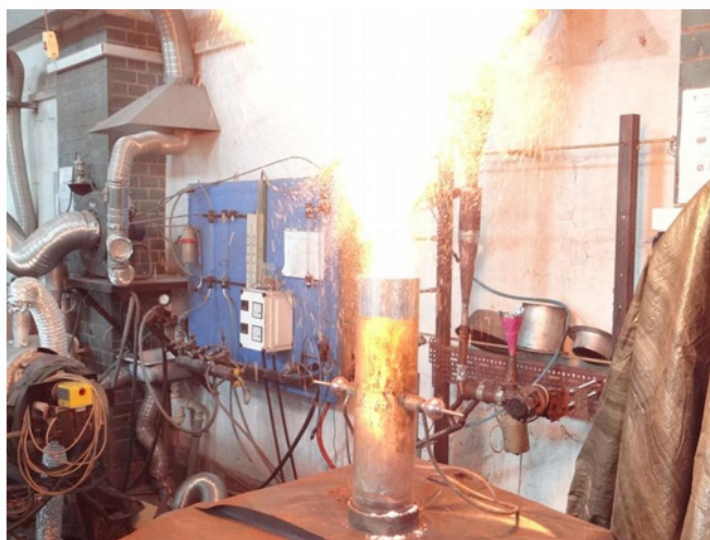


Politechnika Wroclawska





Politechnika Wroclawska



Politechnika Wroclawska





Politechnika Wroclawska



Politechnika Wroclawska

