

Analysis and simulation of LCTL C Resonant Inverter with Multifunction Output

Mariana Beňová*, Branislav Dobrucky†

*Dept. of Electromagnetic and biomedical engineering, University of Žilina, Univerzitná 1, Žilina, Slovakia, e-mail: benova@fel.uniza.sk

† Dept. of Dept. of Mechatronics and Electronics, University of Žilina, Univerzitná 1, Žilina, Slovakia, e-mail: dobrucky@fel.uniza.sk

Abstract The paper deals with design analysis and simulation of power resonant inverter with integrated LCLC filter and VF transformer (LCTL C). The filter provides sinusoidal output voltage for sensitive loads with harmonic distortion roughly 5% in the whole range of the load (0-100%). The LCTL C filter is supplied from either single-phase voltage inverter in full- or half- bridge connection, or from simple DC/DC buck converter. The output can be considered as simply controlled AC HF power generator (power supply) or DC rectified output (DC power supply), or/and as AC LF source with variable frequency.

Keywords LCLC resonant inverter, HF transformer, cycloconverter output voltage, Fourier analysis

I. INTRODUCTION

There are many applications when load has to be supplied by harmonic voltage with solid harmonic distortion smaller than 5%. Also, many applications need to be supplied from DC/DC power supply with integrated HF transformer. A LCTL C Resonant Inverter can provide both types of AC or DC power supply functions. Other suitable types are LCC resonant converter or LCCLC converter [1], [2]. One of the novel types of converters are LCLCL converter [3] based on LLC resonant scheme, and LCTL C inverter [4], [5] consists of DC/DC buck converter, LCLC resonant filter and HF transformer (HV or normal MV). The HF transformer can also be connected after the LCLC filter, if necessary. The inverter (LCTL C) is usually used as power supply for either HV rectifiers [6] (vacuum displays and CRTs, or X-ray devices) or HF cycloconverters or matrix converters, for 2-phase motor applications [7], [8], respectively.

II. BASIC LCTL C INVERTER ANALYSIS

The basic scheme of LCTL C resonant inverter is shown in Fig. 1. It consists of DC/DC buck converter, LC series resonant filter (with parameters L_{11} , R_{11} , C_1), HF transformer (HV, MV or LV), and LC parallel resonant filter (L_{22} , R_{22} , C_2). The HF transformer can also be connected after the LCTL C filter, if it is necessary.

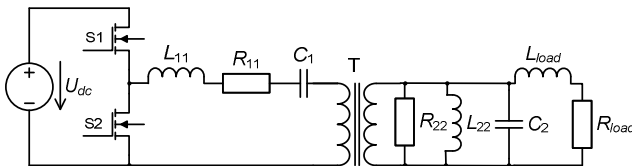


Fig. 1. Basic scheme of LCTL C resonant inverter

Based on works [4]-[6] one can create following equivalent scheme of the LCTL C circuit, Fig. 2. The equivalent parameters of the HF transformer (L_{σ} , R_{σ} , L_m , R_{Fe}) are included into resulting component parameters:

$$R_1 = R_{11} + R_{\sigma} ; \quad \frac{1}{R_2} = \frac{1}{R_{Fe}} + \frac{1}{R_{22}} \quad (1a)$$

$$L_1 = L_{11} + L_{\sigma} ; \quad \frac{1}{L_2} = \frac{1}{L_m} + \frac{1}{L_{22}} \quad (1b)$$

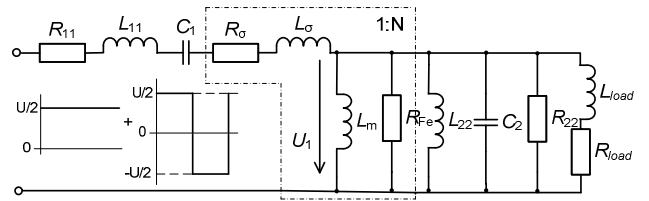


Fig. 2. Equivalent scheme of LCTL C circuit

The state-space equations for equivalent circuit with R-L load will be

$$\begin{aligned} \frac{di_{L1}}{dt} &= \frac{1}{L_1} u(t) - \frac{R_1}{L_1} i_{L1} - \frac{1}{L_1} u_{C1} - \frac{1}{L_1} u_{C2} \\ \frac{di_{L2}}{dt} &= \frac{1}{L_2} u_{C2} \\ \frac{du_{C1}}{dt} &= \frac{1}{C_1} i_{L1} \\ \frac{du_{C2}}{dt} &= \frac{1}{C_1} i_{L1} - \frac{1}{C_2} i_{L2} - \frac{1}{C_2 \cdot R_2} u_{C2} - \frac{1}{C_2} i_L \\ \frac{di_L}{dt} &= \frac{1}{L_{load}} u_{C2} - \frac{R_{load}}{L_{load}} i_L \end{aligned} \quad (2)$$

where

- i_{L1}, i_{L2} - currents through the inductors L_1 and L_2 , respectively
- i_L - current through the load R_{load} , L_{load}
- u_{C1}, u_{C2} - capacitors voltages of C_1 and C_2 , respectively
- $u(t)$ - output voltage of the converter (filter input voltage)

III. DESIGN OF LCLC COMPONENTS

Resonant frequency of $L_1 C_1$ and $L_2 C_2$ should be the same as basic fundamental frequency of the converter and is requested by load demands. So, based on Thomson relation

$$\begin{aligned} \omega_{res} &= \sqrt{\frac{1}{L_1 C_1}} = \sqrt{\frac{1}{L_2 C_2}} \rightarrow \\ \rightarrow L_1 \omega_{res} &= \frac{1}{\omega_{res} C_1} = L_2 \omega_{res} = \frac{1}{\omega_{res} C_2} \end{aligned} \quad (3)$$

where

$\omega_{res} = 2\pi\omega_1$, ω_1 is fundamental frequency of the converter.

Theoretically, $L_1\omega_{res}$ and other members of (3) can be chosen from wide set. Not to exceed nominal voltages and currents of the accumulative elements we take value of the nominal load. Then

$$L_1 = \frac{U_1^2}{\omega_1 P_1} \cdot q = L_2; \quad C_1 = \frac{P_1}{\omega_1 U_1^2} \cdot \frac{1}{q} = C_2 \quad (4)$$

where

q - quality factor is ratio of component's impedance L_1, L_2, C_1 and C_2 to load impedance.

IV. SIMULATION RESULTS

Using suitable numerical method or directly Matlab functions allow (2) the time waveforms of the quantities of LCTLC inverter can be obtained. Simulation results of the quantities of LCTLC inverter with full width of pulse is depicted Fig. 3, where output voltage of LCTLC inverter is high quality (THD ~ 5 %) in steady-state.

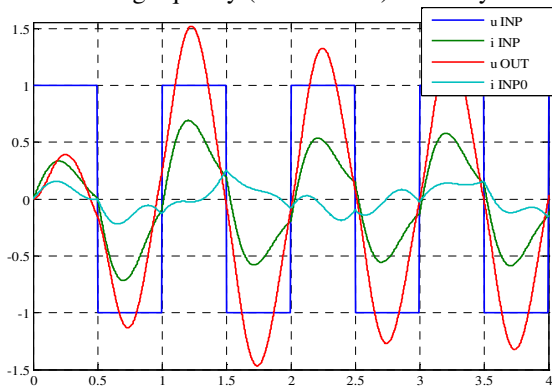


Fig. 3. Basic simulated waveform of LCTLC inverter with full width of pulses

Other system consists of high frequency LCTLC inverter and 2-phase high frequency cycloconverter or matrix converter, respectively. Simulation results of the output quantities of LCTLC inverter and five-pulse cycloconverter is depicted Fig. 4.

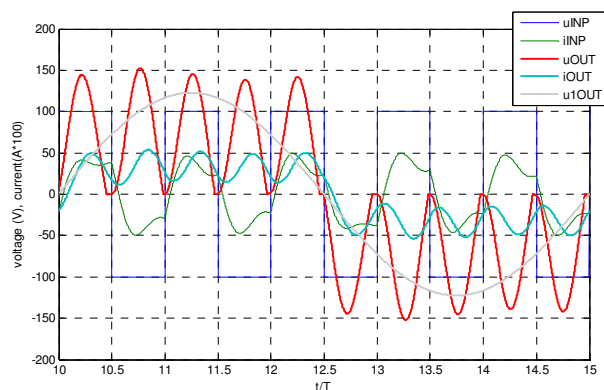


Fig. 4. Simulation results of the output quantities of LCTLC inverter and five-pulse cycloconverter

For output voltage of five-pulse cycloconverter, Fig.4, connecting to output of the LCTLC inverter the fundamental harmonics can be calculated [9] using term

$$\sin(5\omega t) \cdot \sin(\omega t) = (1/2)[\cos(5\omega t - \omega t) - \cos(5\omega t + \omega t)] \quad (5)$$

After integration the result is $U_{5\max(1.h)} = 0,8164 U_{amp} \rightarrow 81,46\%$. The fundamental voltage harmonics of multi-pulse cycloconverter are in Fig.5.

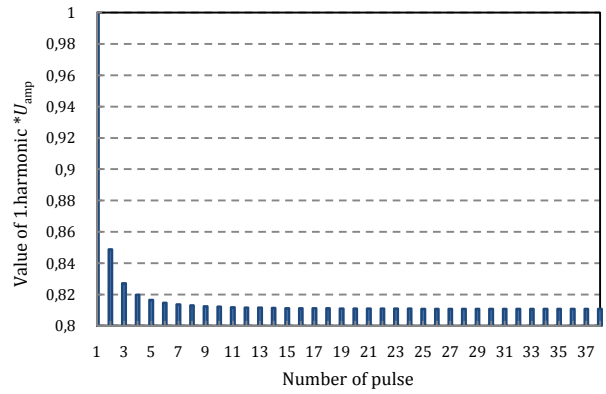


Fig. 4. Calculated fundamental harmonics of the output voltage of multi-pulse cycloconverter

V. CONCLUSION

Design analysis of high frequency LCTLC inverter has been presented. It can be declare from the simulation and experimental results that output voltage of LCTLC inverter is high quality (THD ~ 5 %), output voltage is nearly constant in whole range of the load, frequency of the voltage is constant.

Output quantity of such a type of inverter can be used for second stage presented by half-bridge converters or matrix converter, respectively.

VI. ACKNOWLEDGEMENTS

The authors wish to thank for the financial support to R&D operational program Centre of excellence of power electronics systems and materials for their components OPVaV-2008/2.1/01-SORO, ITMS 26220120046 funded by European regional development fund (ERDF) VEGA Agency for the project No.1/0470/09 and APVV-0138-10.

VII. REFERENCES

- [1] I. Batarseh: "Resonant converter topologies with three and four storage elements", in IEEE Transaction on Power Electronics, Vol. 9, No.1, Jan 1994, pp. 64-73.
- [2] P. Imbertson, N. Mohan: "Asymmetrical duty cycle permits zero switching loss in PWM circuits with no conduction loss penalty", in. IEEE Trans. on Industry Applications, Vol. 29, No. 1, Jan/Feb 1993, pp.
- [3] F.C. Lee, et al.: "Power architecture design with improved system efficiency, EMI and power density", in Proc. of IEEE-PESC'08 Int'l Conf., Rhodes (GR), 2008, pp. 4131-4137.
- [4] Y.A. Ang, M.P. Foster, C.M. Bingham, D.A Stone, H.I. Sewell, D. Howe: "Analysis of 4th-order LCLC resonant power converters", in Proc. of IEE Electrical Power Applications, Vol. 131 (2004), No. 2, pp.169-181.
- [5] B. Dobrucky, M. Benova, S. Kascak: "Transient analysis and modelling of 2nd- and 4th-order LCLC filter under non-symmetrical control", in Electronics and Electrical Engineering, KTU Kaunas (LT), Vol. 5 (111), 2011, pp. N/A.
- [6] F. da S. Cavalante: High output voltage series-resonant DC-DC converter for medical X-ray imaging applications. Dissertation No. 16414, ETH Zurich (CH), 2006.
- [7] B. Dobrucky, et al.: "Two-phase power electronic drive with split -single- phase induction motor", in Proc. of IECON'10 Int'l Conf., 2010, IEEE-IES, Phoenix (AZ, USA), pp. CD-ROM.
- [8] B. Dobrucky, M. Benova, M. Frivaldsky, M. Prazenica: "Control strategies of 2-stage combine LLC- and direct converter - modelling and comparison", in Proc. of ELEKRO'10 Int'l Conf., Zilina (SK), May 2010, pp. CD ROM.
- [9] S.Jeevanathan, P.Dananjayan, R.Madhavan: "Novel single-phase to single phase cycloconversion strategies :mathematical and simulation study, in: International journal of power and energy systems, Vol.27, No.4, 2007